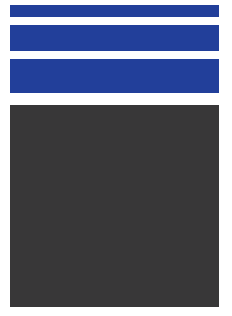
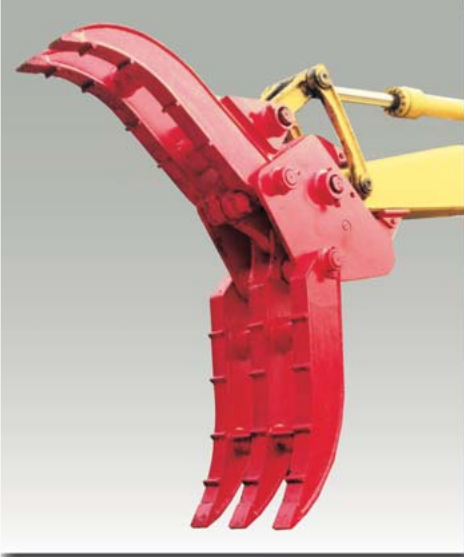




POWER FORK



PC30MR-2/PC50MR-2
PC78US-6
PC120-6/PC200-7



Meeting customers' requirements for manpower saving and unmanned operation

Demonstrating unrivalled power in every kind of demolition and debris collecting work!

- Demolition of wooden houses and loading of generated wastes
- Loading of stones and blocks at a construction site
- Collecting and Loading of reinforcing bars and scrap
- Loading of lumber and general wood
- Handling of industrial wastes and other large-sized junk
- Collecting and loading of heavy items



Working Gear

**PC30MR-2/PC50MR-2
PC78US-6
PC120-6/PC200-7**

POWER FORK

Features of Power Fork

[Easy to install and remove]

- The fork can be installed only by replacing two bucket pins.
- Arm-friendly special plastic is adopted for the securing pad.

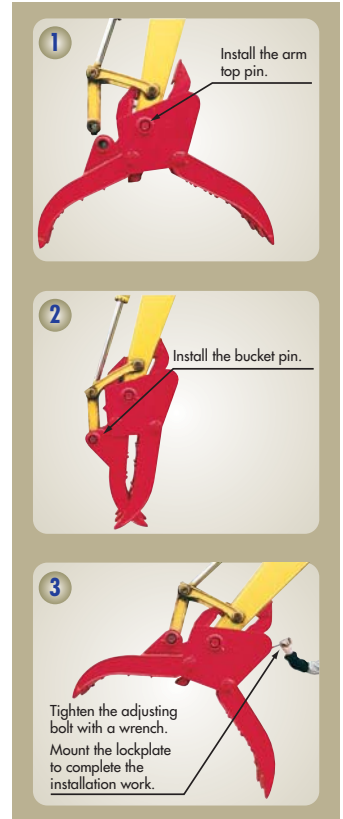
[Powerful and Sturdy]

- High tensile steel is adopted for the upper and lower teeth, while special steel alloy is used for the pin on which heavy load is applied.

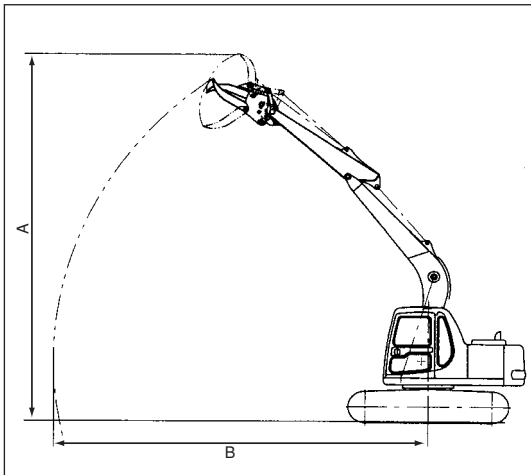
[Light and Safe]

- Light weight has been attained thanks to a simplified structure and the use of high tensile steel. The fork assures good balance with the base machine and excellent safety.

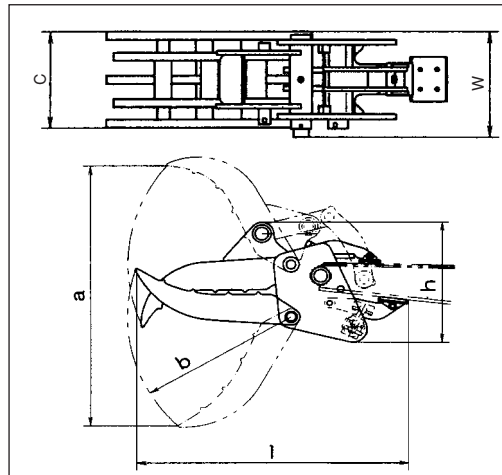
Very simple installation steps



Working Range



Outside Drawing



Specifications

Specifications		Model	PC30MR-2	PC50MR-2	PC78US-6	PC120-6	PC200-7
Power fork type			PF30B	PF40B	PF60B	PF120B	PF200B
Operating weight		kg/lb	3260/7190	5170/11400	7060/15560	12170/26830	19890/43850
Engine model			KOMATSU 3D84E-5	KOMATSU 4D88E-5	KOMATSU 4D95LE	KOMATSU S4D102E	KOMATSU SAA6D102E
Flywheel horsepower		PS/HP(kW)/RPM	28/27.6(20.6)/2500	40/39.4(29.4)/2350	55/54(40.5)/1850	87/86(64)/2200	145/143(107)/1950
Dimensions and weight of power fork	a Max. opening width	mm/ft.in	1040/3'5"	1220/4'	1505/4'11"	1815/5'11"	2080/6'10"
	b Tooth length	mm/ft.in	605/2'	720/2'4"	890/2'11"	1010/3'4"	1155/3'9"
	c Tooth width	mm/ft.in	300/1'	350/1'2"	405/1'4"	545/1'9"	700/2'4"
	h Overall height	mm/ft.in	505/1'8"	590/1'11"	680/2'3"	820/2'8"	1050/3'5"
	w Overall width	mm/ft.in	340/1'1"	395/1'4"	430/1'5"	600/2'	745/2'5"
	l Overall length	mm/ft.in	1015/3'4"	1190/3'11"	1480/4'10"	1765/5'9"	1940/6'4"
	Weight	kg/lb	150/330	240/530	420/930	600/1325	1030/2270
Working range	A Max. working height	mm/ft.in	4585/15'1"	5575/18'3"	6770/22'3"	8545/28'	8965/29'5"
	B Max. working radius	mm/ft.in	5005/16'5"	6085/20'	6185/20'4"	8125/26'8"	9460/31'
Applicable base machine			PC27R-8,PC35R-8 PC27MR-1,PC30MR-2, PC35MR-2	PC45R-8 PC40MR-2,PC50MR-2, PC58UU-3	PC60-7 PC78MR-6 PC78US-6/PC78UU-6	PC100-6,PC120/PC120LC-6, PC130-6 & PC160LC-7 PC128US-2,PC138US-2 & PC158US-2 PC128UU-2	PC200/PC200LC-7, PC220/PC220LC-7, & PC230-7 PC228US-3

Remarks:
An excessive stress may be applied to the arm depending on the type of work the machine engages in. It is requested, therefore, to weld a reinforcing steel plate both on the upper and lower surfaces of the arm. For more information on the reinforcement of the arm, see the operation and maintenance manual.

- The machine in the photographs may partially differ from an actual machine on sale. Furthermore, the machine takes the posture in the photographs only for sales brochures. For the sake of safety, do not leave a machine unattended in such posture.
- For precautions when operating the machine, refer to the operation and maintenance manual.

©2006 Komatsu Printed in Japan 2006W1

KOMATSU®
Komatsu Ltd.

3-6 Akasaka 2-chome, Minato-ku
Tokyo 107-8414, Japan
Phone:(81)-3-5561-2787
Fax:(81)-3-3587-2928