



Working Gear

GALEO

# MOBILE POWER SHEAR

PC300LC/ PC400LC



PC300LC with JHSB330R

The advent of a mobile power shear best suited to various types of shearing work

- Best suited to shearing work like scrapping, plant demolition, etc.
- Capable of picking up a steel lying on the ground, piercing and cutting
- A combination of upper jaw cutters curved arrangement and lower jaw cutters in linear arrangement enables to pull in a steel to the throat and shear it with great force. Thus quick shearing is ensured.
- Cutters are communized to only two types for upper and lower jaw cutters. It reduces cutter inventory and pertaining cost.

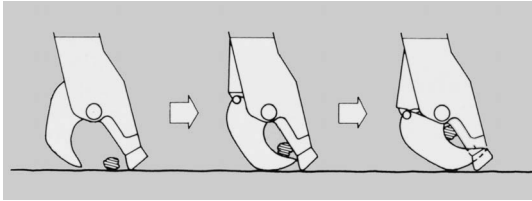
**KOMATSU**<sup>®</sup>



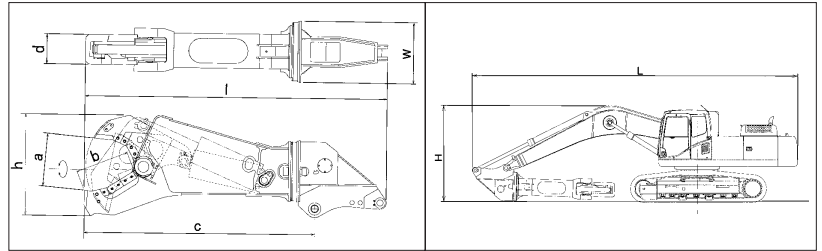
**PC300LC  
PC400LC**

# MOBILE POWER SHEAR

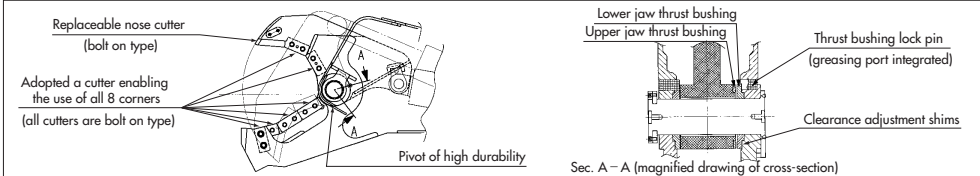
## ■ Picking Up and Shearing Procedure



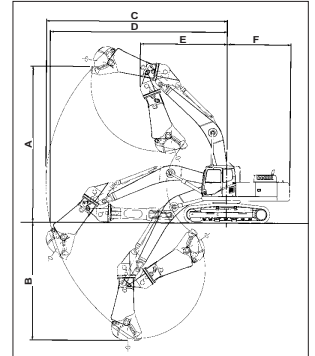
## ■ Outside Drawing



## ■ Realized both increased shearing force and reduced maintenance cost



## ■ Working Range



## ■ Specifications

Specifications		Model	PC300LC		PC400LC	
Shear model			JHBS330	JHBS330R	JHBS430	JHBS430R
Shear rotation mechanism			Fixed	360° hydraulic rotation	Fixed	360° hydraulic rotation
Operating weight		kg/lb	35600/78480	36400/80250	45200/99650	46200/101850
Engine model			KOMATSU SAA6D114E		KOMATSU SA6D125E	
Flywheel horsepower		PS/HP(kW)/RPM	245/242(180)/1900		310/306(228)/2050	
Max. shearing force (at cutter tip)		kN/ton(U.S.ton)	18064/1842(2030)	18064/1842(2030)	19613/2000(2205)	19613/2000(2205)
Max. shearing force (at cutter throat)		kN/ton(U.S.ton)	79287/8085(8912)	79287/8085(8912)	94948/9682(10672)	94948/9682(10672)
Shearing capability	I beam steel	mm/ft.in	600×200/2'×8"	600×200/2'×8"	700×250/2'4"×10"	700×250/2'4"×10"
	H beam steel	mm/ft.in	300×300/1'×1'	300×300/1'×1'	600×300/2'×1'	600×300/2'×1'
	Round bar steel	mm/ft.in	Φ89/Φ3.5"	Φ89/Φ3.5"	Φ102/Φ4.0"	Φ102/Φ4.0"
	Steel pipe	mm/ft.in	500A/1'8"A	500A/1'8"A	550A/1'10"A	550A/1'10"A
	Steel plate	mm/ft.in	22/0.9"	22/0.9"	25/1"	25/1"
	a. Max. jaw opening	mm/ft.in	840/2'9"	840/2'9"	940/3'1"	940/3'1"
	b. Throat depth	mm/ft.in	865/2'10"	865/2'10"	940/3'1"	940/3'1"
	c. Installation length	mm/ft.in	2700/8'10"	3750/12'4"	3050/10'	4050/13'3"
	d. Jaw tip width	mm/ft.in	485/1'7"	485/1'7"	510/1'8"	510/1'8"
Dimensions of shear when installed	h. Overall height	mm/ft.in	1750/5'9"	1650/5'5"	1850/6'1"	1750/5'9"
	w. Overall width	mm/ft.in	700/2'4"	1000/3'4"	920/3'	1000/3'3"
	l. Overall length	mm/ft.in	3850/12'8"	4890/16'1"	4310/14'2"	5300/17'5"
Shear weight		kg/lb	4970/10960	5780/12740	5980/13180	6980/15390
Required oil pressure for shear		kgf/cm <sup>2</sup> (PSI/MPa)	340(4840/33.3)	340(4840/33.3)	340(4840/33.3)	340(4840/33.3)
Required oil flow rate for shear		ltr/min(U.S.Gal)	500(132)	500(132)	600(159)	600(159)
Jaw speed	Opening	sec.	5±1	5±1	6±1	6±1
	Closing	sec.	6±1	6±1	7±1	7±1
Working Range	A. Max. shearing height	mm/ft.in	7760/25'6"	8460/27'9"	8630/28'4"	8630/28'4"
	B. Max. shearing depth	mm/ft.in	5320/17'5"	6270/20'7"	5460/17'11"	6480/21'3"
	C. Max. shearing reach	mm/ft.in	8570/28'1"	9630/31'7"	9580/31'5"	10300/33'10"
	D. Max. shearing reach on ground	mm/ft.in	8320/27'4"	9410/30'10"	9320/30'7"	10060/33'
	E. Min. work equipment swing radius	mm/ft.in	4825/15'10"	4660/15'3"	5280/17'4"	5140/16'10"
	F. Tail swing radius	mm/ft.in	3450/11'4"	3450/11'4"	3645/12'	3645/12'
When folded	L. Overall length	mm/ft.in	11140/36'7"	11120/36'6"	12030/39'6"	11980/39'4"
	H. Overall height	mm/ft.in	3300/10'10"	3220/10'7"	3740/12'3"	3495/11'6"

(Note 1)

When you attempt to cut a steel beam larger than the shear is capable of, pierce a hole in the web first and then cut off the remainder. The shearing capability data shown in the table may vary depending on the shape of steel, condition of inside beams or plate thickness, etc.

(Note 2)

The shearing capability of steel pipes in the table is for ordinary steel pipes. The data may vary depending on materials (stainless steel, cast steel, etc) or pipe thickness.

(Note 3)

The shearing capability data shown in the table represent a typical case and as such does not indicate the max. size of a steel product that the machine is capable of shearing. The shearing capability may vary depending on the conditions of a steel as well as conditions of the hydraulic excavator, in particular how well the machine is maintained.

- JHBS330 and JHBS330R can be mounted on Komatsu PC300, PC340LC, PC350 and PC350LC hydraulic excavators, too. Likewise, Model JHBS430 and JHBS430R models can be mounted on Komatsu PC450 and PC450LC hydraulic excavators, too. For more details, you are recommended to consult the Komatsu distributor.
- The machine in the photographs may partially differ from an actual machine on sale. Furthermore, the machine posture in the photographs is only for sales brochures. For the sake of safety, do not leave a machine unattended in such posture.
- For precautions when operating the machine, refer to the operation and maintenance manual.

©2006 Komatsu Printed in Japan 2006W1

**KOMATSU®**  
**Komatsu Ltd.**

3-6 Akasaka 2-chome, Minato-ku  
Tokyo 107-8414, Japan  
Phone:(81)-3-5561-2787  
Fax:(81)-3-3587-2928