

# KOMATSU®

## PC160LC-7 With Tier 3 Engine

**FLYWHEEL HORSEPOWER**

86 kW **115 HP** @ 2200 rpm

**OPERATING WEIGHT**

16620–17140 kg

**36,640–37,790 lb**

**BUCKET CAPACITY**

0.37–0.95 m<sup>3</sup> **0.48–1.24 yd<sup>3</sup>**

**PC  
160  
LC**



Photo may include optional equipment.

HYDRAULIC EXCAVATOR

# WALK-AROUND

## *Ecology and Economy Features*

### ● *Low Emission Engine*

A powerful, turbocharged and air-to-air aftercooled Komatsu SAA4D107E-1 provides 86 kW **115 HP**. This engine meets EPA Tier 3 and EU Stage 3A emissions regulations, without sacrificing power or machine productivity.

- Economy mode improves fuel consumption.

### ● *Low Operation Noise*

The dynamic noise is reduced compared with the previous model.

## *Productivity Features*

### ● *Large Drawbar Pull*

provides superb steering and slope climbing performance.

### ● *Higher Lifting Capacity*

Lifting mode is provided for superb lifting operation.

## *Other Features*

- Slip resistant plates for improved foot grip.
- Travel alarm
- Large left and right side mirrors with additional sidewise and rear mirror.



## *Large Comfortable Cab*

- Low noise design
- Low vibration with cab damper mounting
- Highly pressurized cab with automatic air conditioner

## **KOMTRAX™**

KOMTRAX equipped machines can send location, SMR and operation maps to a secure website utilizing wireless technology. Machines also relay error codes, cautions, maintenance items, fuel levels, and much more.

**FLYWHEEL HORSEPOWER**

86 kW 115 HP @ 2200 rpm

**OPERATING WEIGHT**

16620 – 17140 kg

**36,640 – 37,790 lb****BUCKET CAPACITY**0.37 – 0.95 m<sup>3</sup>**0.48 – 1.24 yd<sup>3</sup>****Easy Maintenance**

- Long replacement interval of engine oil, engine oil filter, hydraulic oil, and hydraulic filter.
- Equipped with fuel pre-filter as standard (with water separator)
- Side-by-side radiator and oil cooler concept enables independent removal and installation of those two components.
- Easy access to engine oil filter, fuel filter, and fuel drain valve
- Fuel filter is remotely mounted to improve accessibility.
- Equipped with KOMTRAX
- Equipped with the EMMS monitoring system

**Multi-function Color Monitor**

- Four working modes designed to match engine speed, pump delivery, and system pressure.
- Power mode for maximum production/power
- Breaker mode for optimum engine rpm, hydraulic flow, and pressure
- Economy mode for lower fuel consumption and noise
- Lifting mode for high lifting capacity

**Excellent Reliability and Durability**

- High rigidity work equipment
- Sturdy frame structure
- Reliable Komatsu manufactured major components
- Highly reliable electronic devices
- Strengthened undercarriage that utilizes 22-ton class components

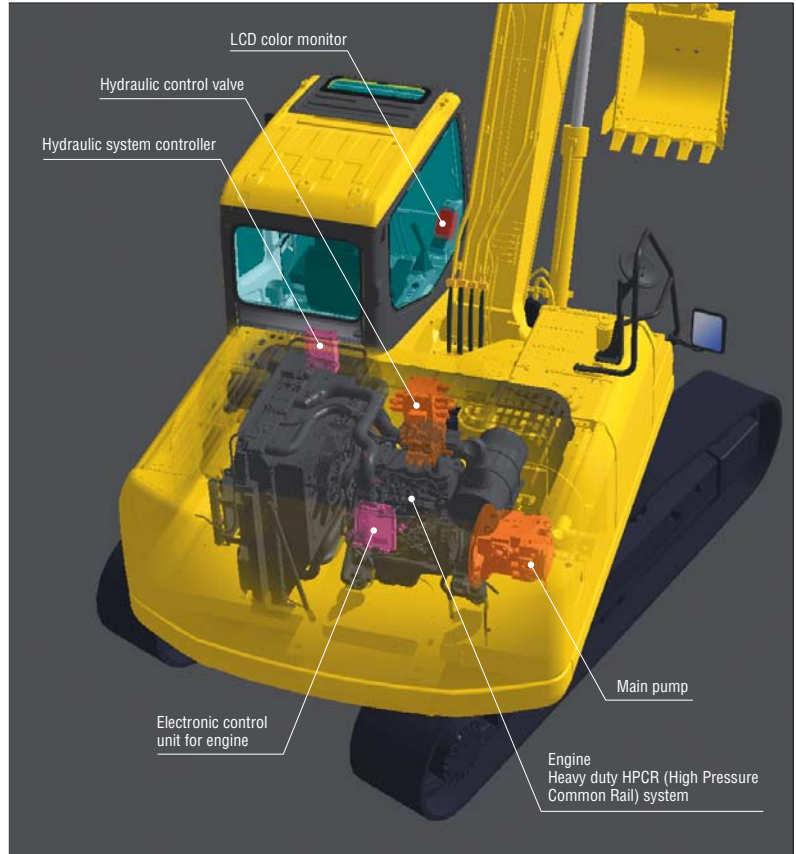


# ECOLOGY & ECONOMY FEATURES

## Komatsu Technology



Komatsu develops and produces all major components, such as engines, electronics, and hydraulic components, in house. With this “Komatsu Technology,” and added customer feedback, Komatsu is achieving great advancements in technology. To achieve both high levels of productivity and economical performance, Komatsu has developed the main components with a total control system. The result is a new generation of high performance and environment friendly excavators.



## Low Emission Engine

Komatsu SAA4D107E-1 meets EPA Tier 3 and EU stage 3A emission regulations and reduced NOx emission by 30% compared with the previous model.



## Low Operational Noise

The low-noise emitting engine and methods to reduce the noise at the source enable low noise operation.



## LCD Multi-function Color Monitor

### Working Mode Selection

The PC160LC-7 excavator is equipped with four working modes (P, E, L and B mode). Each mode is designed to match engine speed, pump speed, and system pressure with the current application. This provides the flexibility to match equipment performance to the job at hand.

| Working Mode | Application  | Advantage  |
|--------------|--------------|--|
| P            | Power mode   | <ul style="list-style-type: none"> <li>Maximum production/power</li> <li>Fast cycle time</li> </ul>        |
| E            | Economy mode | <ul style="list-style-type: none"> <li>Excellent fuel economy</li> </ul>                                   |
| L            | Lifting mode | <ul style="list-style-type: none"> <li>Hydraulic pressure is increased by 7%</li> </ul>                    |
| B            | Breaker mode | <ul style="list-style-type: none"> <li>Optimum engine rpm, hydraulic flow for breaker operation</li> </ul> |



### Economy Mode

Economy mode is environmentally friendly. Fuel consumption is reduced 13% (compared with the previous model in Active mode).

### Lifting Mode

When the lifting mode is selected, lifting capacity is increased 7% by raising hydraulic pressure.

### Breaker Mode

Flow can be adjusted from the cab to match various attachment requirements.

## Productivity Features

### Larger Maximum Drawbar Pull

Larger maximum drawbar pull provides superb steering and slope climbing performance.

Maximum drawbar pull: 156 kN 15950 kgf **35,160 lb.**



### Power Max Function

This function temporarily increases digging force by 7% for added power in tough situations.



### Larger Lifting Capacity

Lifting capacity is increased by the improved lateral stability of the long track and the lifting mode feature.

## WORKING ENVIRONMENT

*PC160LC-7 cab interior is spacious and provides a comfortable working environment...*

### Large Comfortable Cab

#### Multi-Position Controls

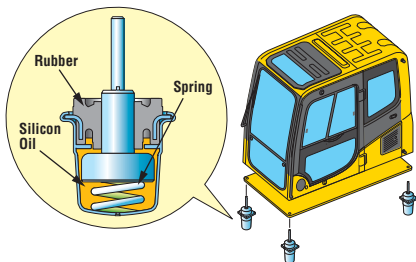
The multi-position, PPC (pressure proportional control) levers allow the operator to work in comfort while maintaining precise control. A double-slide mechanism allows the seat and controllers to move together or independently, allowing the operator to position the seat and controllers for maximum productivity and comfort.

#### Low Cab Noise

The newly-designed cab is highly rigid and has excellent sound absorption ability. Through improvement of noise source reduction and use of a low noise engine, hydraulic equipment, and air conditioner allows this machine to generate a low level of noise.

#### Low Vibration with Cab Damper Mounting

PC160LC-7 uses multi-layer viscous mount system that incorporates a longer stroke and adds a spring. The new cab damper mounting combined with high rigidity deck aids vibration reduction at the operator's seat.



*Seat Sliding Amount: 340 mm 13.4", increased 120 mm 4.7"*

#### Comfortable Cab

A wide spacious cab includes seat with reclining backrest. The seat height and longitudinal inclination are easily adjusted using a pull-up lever. Reclining the seat further enables you to place it into the fully flat state with the headrest attached.

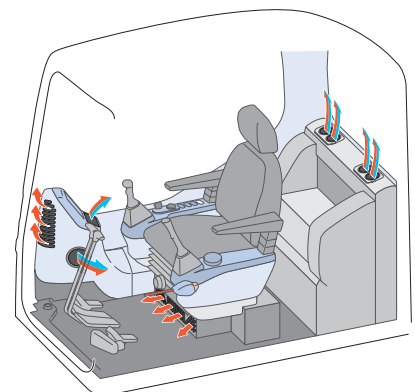


#### Pressurized Cab

Automatic air conditioner, air filter, and a higher internal air pressure (+6.0 mm Aq +0.2" Aq) help prevent external dust from entering the cab.

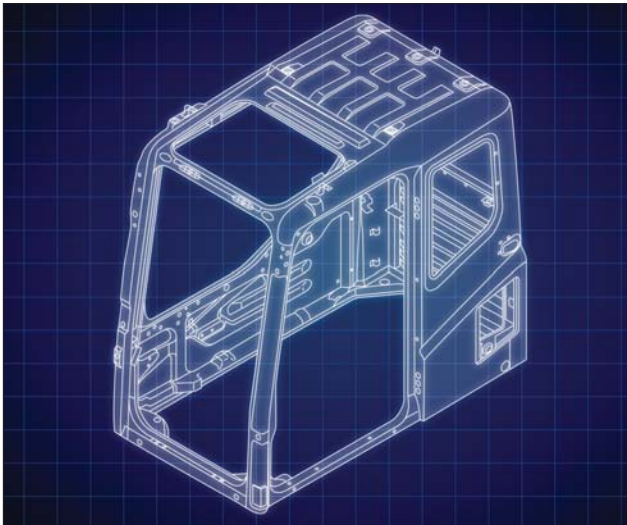
#### Automatic Air Conditioner

A 6,900 kcal **27,400 Btu** air conditioner is utilized. The bi-level control function keeps the inside of the cab comfortable from top to bottom throughout the year. The defroster function keeps cab glass clear.

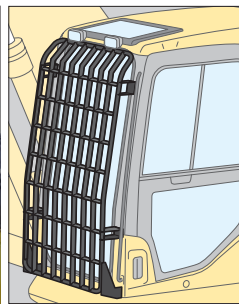


**Cab**

The newly designed, fully pressed, and reinforced cab is manufactured by solid press forming process to attain an ideal strong frame structure having high rigidity.



*OPG Level 2 Top Guard (optional)*



*Front Full Guard Level 2 (optional)*

**Wide Visibility**

The right side window pillar has been removed and the rear pillar reshaped to provide better visibility.



**Slip-Resistant Plates**

Highly durable slip-resistant plates maintain superior foot traction performance for the long term.



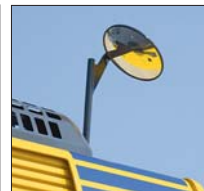
**Lock Lever**

Makes all hydraulic cab controls inoperable. Neutral start function allows the machine to be started only in the lock position.



**Large Side-view, Rear, and Sidewise Mirrors**

Enlarged left-side mirror and addition of rear and side mirrors enhance visibility.



**Pump/Engine Room Partition**

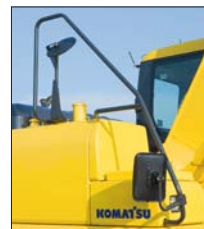
Bulk head wall separates the engine and pump rooms.

**Thermal and Fan Guards**

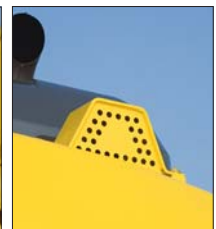
Thermal and fan guards are placed around high-temperature parts of the engine and fan drive.



*Large Serrated Steps*



*Large Hand Rail*



*Travel Alarm*

# MAINTENANCE FEATURES

## Easy Maintenance

Komatsu designed the PC160LC-7 to have easy service access. We know by doing this, routine maintenance and servicing are less likely to be skipped, which can mean a reduction in costly downtime later on. Here are some of the many service features found on the PC160LC-7.

### Easy Access to Engine Oil Filter, Fuel Filter, and Fuel Drain Valve

Engine oil filter, fuel filter and fuel drain valve are remotely mounted to improve accessibility.



Engine Oil Filter



Fuel Filter



Fuel Drain Valve

### Side-by-side Cooling Modules

Since radiator, aftercooler and oil cooler are arranged in parallel, it is easy to clean, remove and install them.

Radiator, aftercooler, and oil cooler made of aluminum have high cooling efficiency and are easily recycled.



Side-by-side Cooling

### Equipped with the Fuel Pre-filter (with Water Separator)

Removes water and contaminants in the fuel to prevent fuel problems. (With built-in priming pump)



### Equipped with the Eco-drain Valve as Standard

Enables easier and cleaner engine oil changes.

## Maintenance Costs Reduced

### Long Replacement Interval of Hydraulic Oil and Filter/Engine Oil and Filter

High performance filters are used in the hydraulic circuit and engine. Longer hydraulic oil, hydraulic oil filter, engine oil, and engine oil filter element replacement intervals significantly reduce maintenance costs.

Engine oil & engine oil filter every **500** hours

Hydraulic oil every **5000** hours

Hydraulic oil filter every **1000** hours



### High-Pressure In-Line Filters

The PC160LC-7 has high pressure in-line filters installed at the pump discharge ports. This provides an additional level of hydraulic system protection.

# SPECIFICATIONS



## ENGINE

Model . . . . . Komatsu SAA4D107E-1  
 Type . . . . . Water-cooled, 4-cycle, direct injection  
 Aspiration . . . . . Turbocharged, aftercooled  
 Number of cylinders . . . . . 4  
 Bore . . . . . 107 mm **4.21"**  
 Stroke . . . . . 120 mm **4.72"**  
 Piston displacement . . . . . 4.46 ltr **272 in<sup>3</sup>**  
 Power rating  
 Gross (SAEJ1995) . . . . . 90 kW **120 HP** @ 2200 rpm  
 Net (ISO 9249/SAEJ1349) . . . . . 86 kW **115 HP** @ 2200 rpm  
 Fan drive type . . . . . Mechanical  
 Governor . . . . . All-speed control, electronic

Meets EPA Tier 3 and EU Stage 3A.



## HYDRAULICS

Type . . . . . HydrauMind (Hydraulic Mechanical Intelligence New Design), closed-center system with load sensing valves and pressure compensated valves  
 Number of selectable working modes . . . . . 4  
 Main pump:  
 Type . . . . . Variable displacement piston type  
 Pumps for . . . . . Boom, arm, bucket, swing, and travel circuits  
 Maximum flow . . . . . 312 ltr/min **82.4 U.S. gal/min**  
 Supply for control circuit . . . . . Self-reducing valve  
 Hydraulic motors:  
 Travel . . . . . 2 x axial piston motor with parking brake  
 Swing . . . . . 1 x axial piston motor with swing holding brake  
 Relief valve setting:  
 Implement circuits . . . . . 37.3 MPa 380 kgf/cm<sup>2</sup> **5,400 psi**  
 Travel circuit . . . . . 37.3 MPa 380 kgf/cm<sup>2</sup> **5,400 psi**  
 Swing circuit . . . . . 28.9 MPa 295 kgf/cm<sup>2</sup> **4,190 psi**  
 Pilot circuit . . . . . 3.2 MPa 33 kgf/cm<sup>2</sup> **470 psi**  
 Hydraulic cylinders:  
 (Number of cylinders – bore x stroke x rod diameter)  
 Boom . . . . . 2–110 mm x 1175 mm x 75 mm **4.3" x 46.3" x 3.0"**  
 Arm . . . . . 1–120 mm x 1342 mm x 85 mm **4.7" x 52.8" x 3.3"**  
 Bucket . . . . . 1–105 mm x 1027 mm x 70 mm **4.1" x 40.4" x 2.8"**



## SWING SYSTEM

Drive method . . . . . Hydrostatic  
 Swing reduction . . . . . Planetary gear  
 Swing circle lubrication . . . . . Grease-bathed  
 Service brake . . . . . Hydraulic lock  
 Holding brake/Swing lock . . . . . Mechanical disc brake  
 Swing speed . . . . . 12.0 rpm  
 Swing torque . . . . . 4331 kg•m **31,314 ft lbs**



## DRIVES AND BRAKES

Steering control . . . . . Two levers with pedals  
 Drive method . . . . . Hydrostatic  
 Maximum drawbar pull . . . . . 156 kN 15950 kgf **35,160 lb**  
 Gradeability . . . . . 70%, 35°  
 Maximum travel speed: High . . . . . 5.5 km/h **3.4 mph**  
 (Auto-Shift) Low . . . . . 3.4 km/h **2.1 mph**  
 Service brake . . . . . Hydraulic lock  
 Parking brake . . . . . Mechanical disc brake



## UNDERCARRIAGE

Center frame . . . . . X-frame  
 Track frame . . . . . Box-section  
 Seal of track . . . . . Sealed track  
 Track adjuster . . . . . Hydraulic  
 Number of shoes (each side): . . . . . 44  
 Number of carrier rollers (each side): . . . . . 2  
 Number of track rollers (each side): . . . . . 7



## COOLANT AND LUBRICANT CAPACITY (REFILLING)

Fuel tank . . . . . 280 ltr **74 U.S. gal**  
 Coolant . . . . . 18.5 ltr **4.9 U.S. gal**  
 Engine . . . . . 16 ltr **4.2 U.S. gal**  
 Final drive, each side . . . . . 3.5 ltr **0.9 U.S. gal**  
 Swing drive . . . . . 4.5 ltr **1.2 U.S. gal**  
 Hydraulic tank . . . . . 121 ltr **32 U.S. gal**



## OPERATING WEIGHT (APPROXIMATE)

Operating weight, including 5150 mm **16'11"** one-piece boom, 2610 mm **8'7"** arm, SAE heaped 0.65 m<sup>3</sup> **0.85 yd<sup>3</sup>** backhoe bucket, rated capacity of lubricants, coolant, full fuel tank, operator, and standard equipment.

|        | Shoes        |    | Operating Weight |               | Ground Pressure    |             |
|--------|--------------|----|------------------|---------------|--------------------|-------------|
|        | mm           | in | kg               | lb            | kg/cm <sup>2</sup> | psi         |
| 600 mm | <b>24"</b>   |    | 16620            | <b>36,640</b> | 0.40               | <b>5.69</b> |
| 700 mm | <b>28"</b>   |    | 16840            | <b>37,130</b> | 0.35               | <b>4.98</b> |
| 800 mm | <b>31.5"</b> |    | 17140            | <b>37,790</b> | 0.30               | <b>4.28</b> |



## WORKING FORCES

|            | Arm                                | 2610 mm <b>8'7"</b>                   | 2900 mm <b>9'6"</b>                   |
|------------|------------------------------------|---------------------------------------|---------------------------------------|
| SAE rating | Bucket digging force at power max. | 109 kN<br>11100 kgf/ <b>24,470 lb</b> | 109 kN<br>11100 kgf/ <b>24,470 lb</b> |
|            | Arm crowd force at power max.      | 83.4 kN<br>8500 kgf/ <b>18,740 lb</b> | 77.5 kN<br>7900 kgf/ <b>17,420 lb</b> |
| ISO rating | Bucket digging force at power max. | 123 kN<br>12500 kgf/ <b>27,560 lb</b> | 123 kN<br>12500 kgf/ <b>27,560 lb</b> |
|            | Arm crowd force at power max.      | 86.3 kN<br>8800 kgf/ <b>19,400 lb</b> | 79.4 kN<br>8100 kgf/ <b>17,860 lb</b> |

# PC160LC-7 HYDRAULIC EXCAVATOR

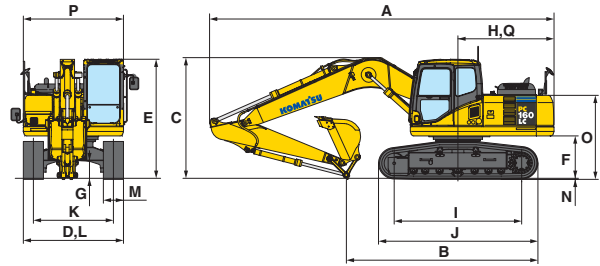
## SPECIFICATIONS



### DIMENSIONS

|          |                                    |         |              |          |              |
|----------|------------------------------------|---------|--------------|----------|--------------|
|          | Arm Length                         | 2610 mm | <b>8'7"</b>  | 2900 mm  | <b>9'6"</b>  |
| <b>A</b> | Overall length                     | 8565 mm | <b>28'1"</b> | 8565 mm  | <b>28'1"</b> |
| <b>B</b> | Length on ground (transport)       | 4760 mm | <b>15'7"</b> | 4565 mm  | <b>15'0"</b> |
| <b>C</b> | Overall height (to top of boom)    | 3000 mm | <b>9'10"</b> | 31000 mm | <b>10'2"</b> |
| <b>D</b> | Overall width                      | 2590 mm | <b>8'6"</b>  |          |              |
| <b>E</b> | Overall height (to top of cab)*    | 2970 mm | <b>9'9"</b>  |          |              |
| <b>F</b> | Ground clearance, counterweight    | 1055 mm | <b>3'6"</b>  |          |              |
| <b>G</b> | Ground clearance (minimum)         | 440 mm  | <b>1'5"</b>  |          |              |
| <b>H</b> | Tail swing radius                  | 2435 mm | <b>8'0"</b>  |          |              |
| <b>I</b> | Track length on ground             | 3170 mm | <b>10'5"</b> |          |              |
| <b>J</b> | Track length                       | 3965 mm | <b>13'0"</b> |          |              |
| <b>K</b> | Track gauge                        | 1990 mm | <b>6'6"</b>  |          |              |
| <b>L</b> | Width of crawler                   | 2590 mm | <b>8'6"</b>  |          |              |
| <b>M</b> | Shoe width                         | 600 mm  | <b>24"</b>   |          |              |
| <b>N</b> | Grouser height                     | 26 mm   | <b>1.0"</b>  |          |              |
| <b>O</b> | Height                             | 2090 mm | <b>6'10"</b> |          |              |
| <b>P</b> | Width                              | 2490 mm | <b>8'2"</b>  |          |              |
| <b>Q</b> | Distance, swing center to rear end | 2390 mm | <b>7'10"</b> |          |              |

\* Excluding grouser height.



### BACKHOE BUCKET, ARM, AND BOOM COMBINATION

| Bucket Type    | Bucket              |                            |                    | Arms                   |               |   |
|----------------|---------------------|----------------------------|--------------------|------------------------|---------------|---|
|                | Capacity            | Width                      | Weight             | 2.6 m<br>8'7"          | 2.9 m<br>9'6" |   |
| Komatsu<br>GSK | 0.37 m <sup>3</sup> | <b>0.48 yd<sup>3</sup></b> | 508 mm <b>20"</b>  | 410 kg <b>903 lb</b>   | V             | V |
|                | 0.47 m <sup>3</sup> | <b>0.61 yd<sup>3</sup></b> | 610 mm <b>24"</b>  | 461 kg <b>1,017 lb</b> | V             | V |
|                | 0.62 m <sup>3</sup> | <b>0.81 yd<sup>3</sup></b> | 762 mm <b>30"</b>  | 526 kg <b>1,159 lb</b> | V             | V |
|                | 0.78 m <sup>3</sup> | <b>1.02 yd<sup>3</sup></b> | 914 mm <b>36"</b>  | 595 kg <b>1,312 lb</b> | W             | X |
|                | 0.95 m <sup>3</sup> | <b>1.24 yd<sup>3</sup></b> | 1067 mm <b>42"</b> | 650 kg <b>1,432 lb</b> | Y             | Y |
| Komatsu<br>HP  | 0.37 m <sup>3</sup> | <b>0.48 yd<sup>3</sup></b> | 508 mm <b>20"</b>  | 511 kg <b>1,126 lb</b> | V             | V |
|                | 0.47 m <sup>3</sup> | <b>0.61 yd<sup>3</sup></b> | 610 mm <b>24"</b>  | 572 kg <b>1,260 lb</b> | V             | V |
|                | 0.62 m <sup>3</sup> | <b>0.81 yd<sup>3</sup></b> | 762 mm <b>30"</b>  | 649 kg <b>1,431 lb</b> | V             | W |
|                | 0.78 m <sup>3</sup> | <b>1.02 yd<sup>3</sup></b> | 914 mm <b>36"</b>  | 735 kg <b>1,620 lb</b> | X             | X |
|                | 0.95 m <sup>3</sup> | <b>1.24 yd<sup>3</sup></b> | 1067 mm <b>42"</b> | 806 kg <b>1,776 lb</b> | Y             | Z |
| Komatsu<br>HPS | 0.37 m <sup>3</sup> | <b>0.48 yd<sup>3</sup></b> | 508 mm <b>20"</b>  | 563 kg <b>1,241 lb</b> | V             | V |
|                | 0.47 m <sup>3</sup> | <b>0.61 yd<sup>3</sup></b> | 610 mm <b>24"</b>  | 635 kg <b>1,400 lb</b> | V             | V |
|                | 0.62 m <sup>3</sup> | <b>0.81 yd<sup>3</sup></b> | 762 mm <b>30"</b>  | 729 kg <b>1,607 lb</b> | V             | W |
|                | 0.78 m <sup>3</sup> | <b>1.02 yd<sup>3</sup></b> | 914 mm <b>36"</b>  | 831 kg <b>1,833 lb</b> | X             | Y |
|                | 0.95 m <sup>3</sup> | <b>1.24 yd<sup>3</sup></b> | 1067 mm <b>42"</b> | 919 kg <b>2,027 lb</b> | Z             | Z |

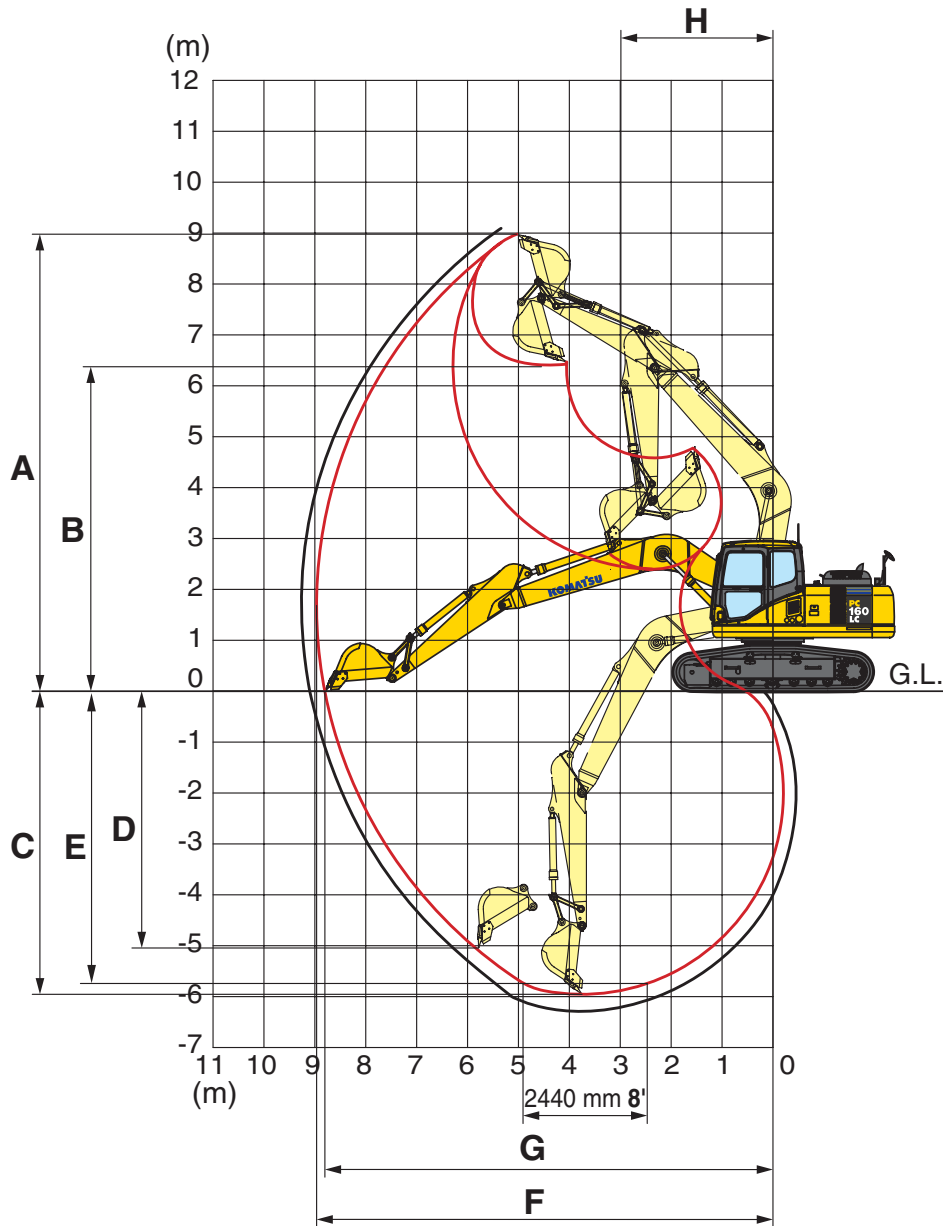
V – Used with densities up to 3,500 lb/yd<sup>3</sup>, W – Used with densities up to 3,000 lb/yd<sup>3</sup>

X – Used with densities up to 2,500 lb/yd<sup>3</sup>, Y – Used with densities up to 2,000 lb/yd<sup>3</sup>, Z – Not useable

# WORKING RANGES



### WORKING RANGE



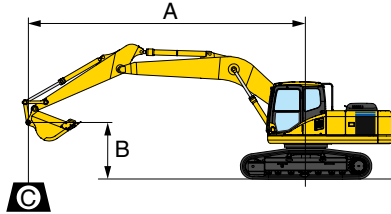
|          | Arm   | 2610 mm 8'7"   | 2900 mm 9'6"   |
|----------|---|----------------|----------------|
| <b>A</b> | Max. digging height                           | 8980 mm 29'6"  | 9130 mm 29'11" |
| <b>B</b> | Max. dumping height                           | 6370 mm 20'11" | 6525 mm 21'5"  |
| <b>C</b> | Max. digging depth                            | 5960 mm 19'7"  | 6250 mm 20'6"  |
| <b>D</b> | Max. vertical wall digging depth              | 5040 mm 16'6"  | 5320 mm 17'5"  |
| <b>E</b> | Max. digging depth of cut for 8' level bottom | 5740 mm 18'10" | 6050 mm 19'10" |
| <b>F</b> | Max. digging reach                            | 8960 mm 29'5"  | 9235 mm 30'4"  |
| <b>G</b> | Max. digging reach at ground level            | 8800 mm 28'10" | 9075 mm 29'9"  |
| <b>H</b> | Min. swing radius                             | 2990 mm 9'10"  | 2995 mm 9'10"  |

# PC160LC-7 HYDRAULIC EXCAVATOR

## LIFTING CAPACITIES



### LIFTING CAPACITY



- A: Reach from swing center
- B: Bucket hook height
- C: Lifting capacity
- Cf: Rating over front
- Cs: Rating over side
- ☉: Rating at maximum reach

#### Conditions:

- Arm: 2610 mm **8'7"**
- Boom length 5150 mm **16'11"**
- Bucket .65 m<sup>3</sup> **.85 yd<sup>3</sup>** (SAE heaped)  
–Bucket weight: 500 kg **1,100 lb.**
- Lifting mode: On

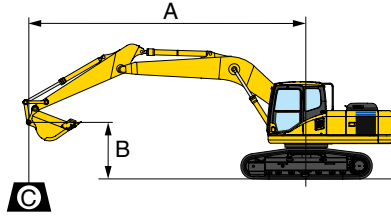
| PC160LC-7      |   | Shoe 600 mm 24"         |                         |                          |                       |                         |                      |                        |                      |                        |                      | Unit: kg/lb             |                        |
|----------------|---|-------------------------|-------------------------|--------------------------|-----------------------|-------------------------|----------------------|------------------------|----------------------|------------------------|----------------------|-------------------------|------------------------|
| B              | A | 1.5 m 5'                |                         | 3.0 m 10'                |                       | 4.6 m 15'               |                      | 6.1 m 20'              |                      | 7.6 m 25'              |                      | ☉ MAX                   |                        |
|                |   | Cf                      | Cs                      | Cf                       | Cs                    | Cf                      | Cs                   | Cf                     | Cs                   | Cf                     | Cs                   | Cf                      | Cs                     |
| 7.6 m<br>25'   |   |                         |                         |                          |                       |                         |                      |                        |                      |                        |                      | *2250<br><b>*5,000</b>  | *2250<br><b>*5,000</b> |
| 6.1 m<br>20'   |   |                         |                         |                          |                       |                         |                      | *3050<br><b>*6,800</b> | 2850<br><b>6,300</b> |                        |                      | *2000<br><b>*4,400</b>  | *2000<br><b>*4,400</b> |
| 4.6 m<br>15'   |   |                         |                         |                          |                       |                         |                      | 4150<br><b>*9,100</b>  | 2850<br><b>6,200</b> |                        |                      | *2000<br><b>*4,400</b>  | 1950<br><b>4,300</b>   |
| 3.0 m<br>10'   |   |                         |                         | *8450<br><b>*18,600</b>  | 8350<br><b>18,400</b> | *5750<br><b>*12,700</b> | 4350<br><b>9,600</b> | 4450<br><b>9,800</b>   | 2700<br><b>6,000</b> | *2750<br><b>*6,100</b> | 1800<br><b>3,900</b> | *2050<br><b>*4,600</b>  | 1700<br><b>3,800</b>   |
| 1.5 m<br>5'    |   |                         |                         | *8500<br><b>*18,800</b>  | 7300<br><b>16,100</b> | 6850<br><b>15,100</b>   | 3950<br><b>8,800</b> | 4250<br><b>9,400</b>   | 2550<br><b>5,600</b> | 2950<br><b>6,500</b>   | 1700<br><b>3,800</b> | *2250<br><b>*5,000</b>  | 1600<br><b>3,500</b>   |
| 0 m<br>0'      |   |                         |                         | *7650<br><b>*16,900</b>  | 6900<br><b>15,200</b> | 6550<br><b>14,400</b>   | 3700<br><b>8,200</b> | 4100<br><b>9,100</b>   | 2400<br><b>5,300</b> | 2900<br><b>6,400</b>   | 1650<br><b>3,700</b> | *2650<br><b>*5,900</b>  | 1650<br><b>3,600</b>   |
| -1.5 m<br>-5'  |   | *5900<br><b>*13,000</b> | *5900<br><b>*13,000</b> | *10500<br><b>*23,200</b> | 6850<br><b>15,100</b> | 6400<br><b>14,100</b>   | 3600<br><b>8,000</b> | 4050<br><b>8,900</b>   | 2350<br><b>5,200</b> |                        |                      | 3150<br><b>6,900</b>    | 1800<br><b>4,000</b>   |
| -3.0 m<br>-10' |   | *9400<br><b>*20,700</b> | *9400<br><b>*20,700</b> | *10900<br><b>*24,100</b> | 6950<br><b>15,400</b> | 6450<br><b>14,200</b>   | 3650<br><b>8,000</b> | 4100<br><b>9,000</b>   | 2350<br><b>5,200</b> |                        |                      | 3900<br><b>8,600</b>    | 2250<br><b>5,000</b>   |
| -4.6 m<br>-15' |   |                         |                         | *7900<br><b>*17,400</b>  | 7250<br><b>16,000</b> | *5250<br><b>*11,500</b> | 3800<br><b>8,400</b> |                        |                      |                        |                      | *4950<br><b>*10,900</b> | 3650<br><b>8,000</b>   |

| PC160LC-7      |   | Shoe 700 mm 28"         |                         |                          |                         |                         |                      |                        |                      |                        |                      | Unit: kg/lb             |                        |
|----------------|---|-------------------------|-------------------------|--------------------------|-------------------------|-------------------------|----------------------|------------------------|----------------------|------------------------|----------------------|-------------------------|------------------------|
| B              | A | 1.5 m 5'                |                         | 3.0 m 10'                |                         | 4.6 m 15'               |                      | 6.1 m 20'              |                      | 7.6 m 25'              |                      | ☉ MAX                   |                        |
|                |   | Cf                      | Cs                      | Cf                       | Cs                      | Cf                      | Cs                   | Cf                     | Cs                   | Cf                     | Cs                   | Cf                      | Cs                     |
| 7.6 m<br>25'   |   |                         |                         |                          |                         |                         |                      |                        |                      |                        |                      | *2250<br><b>*5,000</b>  | *2250<br><b>*5,000</b> |
| 6.1 m<br>20'   |   |                         |                         |                          |                         |                         |                      | *3050<br><b>*6,800</b> | 2900<br><b>6,400</b> |                        |                      | *2000<br><b>*4,400</b>  | *2000<br><b>*4,400</b> |
| 4.6 m<br>15'   |   |                         |                         |                          |                         |                         |                      | *4150<br><b>*9,100</b> | 2850<br><b>6,300</b> |                        |                      | *2000<br><b>*4,400</b>  | *2000<br><b>*4,400</b> |
| 3.0 m<br>10'   |   |                         |                         | *8450<br><b>*18,600</b>  | *8450<br><b>*18,600</b> | *5750<br><b>*12,700</b> | 4400<br><b>9,700</b> | 4500<br><b>9,900</b>   | 2750<br><b>6,000</b> | *2750<br><b>*6,100</b> | 1800<br><b>4,000</b> | *2050<br><b>*4,600</b>  | 1750<br><b>3,800</b>   |
| 1.5 m<br>5'    |   |                         |                         | *8500<br><b>*18,800</b>  | 7400<br><b>16,300</b>   | 6900<br><b>15,300</b>   | 4050<br><b>8,900</b> | 4350<br><b>9,500</b>   | 2600<br><b>5,700</b> | 3000<br><b>6,600</b>   | 1750<br><b>3,900</b> | *2250<br><b>*5,000</b>  | 1650<br><b>3,600</b>   |
| 0 m<br>0'      |   |                         |                         | *7650<br><b>*16,900</b>  | 7000<br><b>15,400</b>   | 6650<br><b>14,600</b>   | 3800<br><b>8,300</b> | 4200<br><b>9,200</b>   | 2450<br><b>5,400</b> | 2950<br><b>6,500</b>   | 1700<br><b>3,700</b> | *2650<br><b>*5,900</b>  | 1650<br><b>3,700</b>   |
| -1.5 m<br>-5'  |   | *5900<br><b>*13,000</b> | *5900<br><b>*13,000</b> | *10500<br><b>*23,200</b> | 6950<br><b>15,300</b>   | 6500<br><b>14,300</b>   | 3650<br><b>8,100</b> | 4100<br><b>9,100</b>   | 2400<br><b>5,300</b> |                        |                      | 3200<br><b>7,000</b>    | 1850<br><b>4,100</b>   |
| -3.0 m<br>-10' |   | *9400<br><b>*20,700</b> | *9400<br><b>*20,700</b> | *10900<br><b>*24,100</b> | 7050<br><b>15,600</b>   | 6550<br><b>14,400</b>   | 3700<br><b>8,200</b> | 4150<br><b>9,100</b>   | 2400<br><b>5,300</b> |                        |                      | 3950<br><b>8,700</b>    | 2300<br><b>5,100</b>   |
| -4.6 m<br>-15' |   |                         |                         | *7900<br><b>*17,400</b>  | 7350<br><b>16,200</b>   | *5250<br><b>*11,500</b> | 3900<br><b>8,600</b> |                        |                      |                        |                      | *4950<br><b>*10,900</b> | 3700<br><b>8,100</b>   |

\*Load is limited by hydraulic capacity rather than tipping. Ratings are based on SAE standard No. J1097. Rated loads do not exceed 87% of hydraulic lift capacity or 75% of tipping load.



## LIFTING CAPACITY



- A: Reach from swing center
- B: Bucket hook height
- C: Lifting capacity
- Cf: Rating over front
- Cs: Rating over side
- ⊗: Rating at maximum reach

### Conditions:

- Arm: 2610 mm **8'7"**
- Boom length 5150 mm **16'11"**
- Bucket .65 m<sup>3</sup> **.85 yd<sup>3</sup>** (SAE heaped)
- Bucket weight: 500 kg **1,100 lb.**
- Lifting mode: On

| PC160LC-7      |   | Shoe 800 mm 31.5" |                  |                   |                  |                  |                 |               |                 |               |    | Unit: kg/lb      |                 |
|----------------|---|-------------------|------------------|-------------------|------------------|------------------|-----------------|---------------|-----------------|---------------|----|------------------|-----------------|
| B              | A | 1.5 m 5'          |                  | 3.0 m 10'         |                  | 4.6 m 15'        |                 | 6.1 m 20'     |                 | 7.6 m 25'     |    | ⊗ MAX            |                 |
|                |   | Cf                | Cs               | Cf                | Cs               | Cf               | Cs              | Cf            | Cs              | Cf            | Cs | Cf               | Cs              |
| 7.6 m<br>25'   |   |                   |                  |                   |                  |                  |                 |               |                 |               |    | *2250<br>*5,000  | *2250<br>*5,000 |
| 6.1 m<br>20'   |   |                   |                  |                   |                  |                  | *3050<br>*6,800 | 2950<br>6,500 |                 |               |    | *2000<br>*4,400  | *2000<br>*4,400 |
| 4.6 m<br>15'   |   |                   |                  |                   |                  |                  | *4150<br>*9,100 | 2900<br>6,400 |                 |               |    | *2000<br>*4,400  | *2000<br>*4,400 |
| 3.0 m<br>10'   |   |                   | *8450<br>*18,600 | *8450<br>*18,600  | *5750<br>*12,700 | 4450<br>9,800    | 4550<br>10,100  | 2750<br>6,100 | *2750<br>*6,100 | 1850<br>4,100 |    | *2050<br>*4,600  | 1750<br>3,900   |
| 1.5 m<br>5'    |   |                   | *8500<br>*18,800 | 7500<br>16,500    | 7000<br>15,500   | 4100<br>9,000    | 4400<br>9,700   | 2600<br>5,800 | 3050<br>6,700   | 1800<br>3,900 |    | *2250<br>*5,000  | 1650<br>3,700   |
| 0 m<br>0'      |   |                   | *7650<br>*16,900 | 7100<br>15,600    | 6700<br>14,800   | 3850<br>8,500    | 4250<br>9,400   | 2500<br>5,500 | 3000<br>6,600   | 1750<br>3,800 |    | *2650<br>*5,900  | 1700<br>3,700   |
| -1.5 m<br>-5'  |   | *5900<br>*13,000  | *5900<br>*13,000 | *10500<br>*23,200 | 7050<br>15,500   | 6600<br>14,600   | 3750<br>8,200   | 4200<br>9,200 | 2400<br>5,300   |               |    | 3250<br>7,100    | 1850<br>4,100   |
| -3.0 m<br>-10' |   | *9400<br>*20,700  | *9400<br>*20,700 | *10900<br>*24,100 | 7150<br>15,800   | 6650<br>14,600   | 3750<br>8,300   | 4200<br>9,300 | 2450<br>5,400   |               |    | 4000<br>8,900    | 2350<br>5,200   |
| -4.6 m<br>-15' |   |                   |                  | *7900<br>*17,400  | 7450<br>16,500   | *5250<br>*11,500 | 3950<br>8,700   |               |                 |               |    | *4950<br>*10,900 | 3750<br>8,300   |

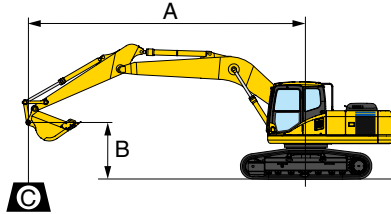
\*Load is limited by hydraulic capacity rather than tipping. Ratings are based on SAE standard No. J1097. Rated loads do not exceed 87% of hydraulic lift capacity or 75% of tipping load.

# PC160LC-7 HYDRAULIC EXCAVATOR

## LIFTING CAPACITIES



### LIFTING CAPACITY



- A: Reach from swing center
- B: Bucket hook height
- C: Lifting capacity
- Cf: Rating over front
- Cs: Rating over side
- ☉: Rating at maximum reach

#### Conditions:

- Arm: 2900 mm **9'6"**
- Boom length 5150 mm **16'11"**
- Bucket .65 m<sup>3</sup> **.85 yd<sup>3</sup>** (SAE heaped)  
–Bucket weight: 500 kg **1,100 lb.**
- Lifting mode: On

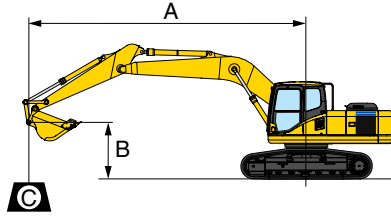
| PC160LC-7      |   | Shoe 600 mm 24"  |                  |                   |                  |                  |               |                 |               |                 |                 | Unit: kg/lb      |                 |
|----------------|---|------------------|------------------|-------------------|------------------|------------------|---------------|-----------------|---------------|-----------------|-----------------|------------------|-----------------|
| B              | A | 1.5 m 5'         |                  | 3.0 m 10'         |                  | 4.6 m 15'        |               | 6.1 m 20'       |               | 7.6 m 25'       |                 | ☉ MAX            |                 |
|                |   | Cf               | Cs               | Cf                | Cs               | Cf               | Cs            | Cf              | Cs            | Cf              | Cs              | Cf               | Cs              |
| 7.6 m<br>25'   |   |                  |                  |                   |                  |                  |               |                 |               |                 |                 | *1950<br>*4,300  | *1950<br>*4,300 |
| 6.1 m<br>20'   |   |                  |                  |                   |                  |                  |               | *3100<br>*6,800 | 2900<br>6,400 |                 |                 | *1750<br>*3,800  | *1750<br>*3,800 |
| 4.6 m<br>15'   |   |                  |                  |                   |                  |                  |               | *3900<br>*8,600 | 2850<br>6,300 | *1750<br>*3,900 | *1750<br>*3,900 | *1700<br>*3,800  | *1700<br>*3,800 |
| 3.0 m<br>10'   |   |                  |                  | *7600<br>*16,800  | *7600<br>*16,800 | *5400<br>*11,900 | 4350<br>9,600 | 4450<br>9,800   | 2700<br>5,900 | 3000<br>6,600   | 1750<br>3,900   | *1800<br>*3,900  | 1650<br>3,600   |
| 1.5 m<br>5'    |   |                  |                  | *10900<br>*24,100 | 7400<br>16,300   | *6850<br>*15,100 | 4000<br>8,800 | 4250<br>9,400   | 2500<br>5,600 | 2900<br>6,400   | 1700<br>3,700   | *1950<br>*4,300  | 1450<br>3,300   |
| 0 m<br>0'      |   |                  |                  | *7950<br>*17,500  | 6650<br>15,100   | 6500<br>14,300   | 3700<br>8,100 | 4100<br>9,000   | 2350<br>5,200 | 2850<br>6,300   | 1650<br>3,600   | *2250<br>*5,000  | 1500<br>3,300   |
| -1.5 m<br>-5'  |   | *5500<br>*12,100 | *5500<br>*12,100 | *10050<br>*22,200 | 6750<br>14,900   | 6350<br>14,000   | 3550<br>7,800 | 4000<br>8,800   | 2300<br>5,000 |                 |                 | *2850<br>*6,300  | 1650<br>3,600   |
| -3.0 m<br>-10' |   | *8550<br>*18,900 | *8550<br>*18,900 | *11250<br>*24,800 | 6850<br>15,100   | 6350<br>14,300   | 3550<br>7,800 | 4000<br>8,800   | 2300<br>5,100 |                 |                 | 3500<br>7,800    | 2000<br>4,500   |
| -4.6 m<br>-15' |   |                  |                  | *8600<br>*19,000  | 7100<br>15,700   | *5800<br>*12,800 | 3700<br>8,200 |                 |               |                 |                 | *4800<br>*10,600 | 3100<br>6,800   |

| PC160LC-7      |   | Shoe 700 mm 28"  |                  |                   |                  |                  |               |                 |               |                 |                 | Unit: kg/lb      |                 |
|----------------|---|------------------|------------------|-------------------|------------------|------------------|---------------|-----------------|---------------|-----------------|-----------------|------------------|-----------------|
| B              | A | 1.5 m 5'         |                  | 3.0 m 10'         |                  | 4.6 m 15'        |               | 6.1 m 20'       |               | 7.6 m 25'       |                 | ☉ MAX            |                 |
|                |   | Cf               | Cs               | Cf                | Cs               | Cf               | Cs            | Cf              | Cs            | Cf              | Cs              | Cf               | Cs              |
| 7.6 m<br>25'   |   |                  |                  |                   |                  |                  |               |                 |               |                 |                 | *1950<br>*4,300  | *1950<br>*4,300 |
| 6.1 m<br>20'   |   |                  |                  |                   |                  |                  |               | *3100<br>*6,800 | 2950<br>6,500 |                 |                 | *1750<br>*3,800  | *1750<br>*3,800 |
| 4.6 m<br>15'   |   |                  |                  |                   |                  |                  |               | *3900<br>*8,600 | 2850<br>6,300 | *1750<br>*3,900 | *1750<br>*3,900 | *1700<br>*3,800  | *1700<br>*3,800 |
| 3.0 m<br>10'   |   |                  |                  | *7600<br>*16,800  | *7600<br>*16,800 | *5400<br>*11,900 | 4400<br>9,700 | *4450<br>*9,800 | 2750<br>6,000 | 3050<br>6,700   | 1800<br>4,000   | *1800<br>*3,900  | 1600<br>3,500   |
| 1.5 m<br>5'    |   |                  |                  | *10900<br>*24,100 | 7500<br>16,500   | *6850<br>*15,100 | 4050<br>8,900 | 4300<br>9,500   | 2550<br>5,600 | 2950<br>6,600   | 1750<br>3,800   | *1950<br>*4,300  | 1500<br>3,300   |
| 0 m<br>0'      |   |                  |                  | *7950<br>*17,500  | 6950<br>15,300   | 6600<br>14,600   | 3750<br>8,300 | 4150<br>9,200   | 2400<br>5,300 | 2900<br>6,400   | 1650<br>3,700   | *2250<br>*5,000  | 1500<br>3,400   |
| -1.5 m<br>-5'  |   | *5500<br>*12,100 | *5500<br>*12,100 | *10050<br>*22,200 | 6850<br>15,100   | 6450<br>14,200   | 3600<br>8,000 | 4050<br>9,000   | 2350<br>5,100 |                 |                 | *2850<br>*6,300  | 1650<br>3,700   |
| -3.0 m<br>-10' |   | *8550<br>*18,900 | *8550<br>*18,900 | *11250<br>*24,800 | 6950<br>15,300   | 6450<br>14,200   | 3600<br>8,000 | 4050<br>9,000   | 2350<br>5,100 |                 |                 | 3600<br>7,900    | 2050<br>4,500   |
| -4.6 m<br>-15' |   |                  |                  | *8600<br>*19,000  | 7200<br>15,900   | *5800<br>*12,800 | 3750<br>8,300 |                 |               |                 |                 | *4800<br>*10,600 | 3150<br>6,900   |

\*Load is limited by hydraulic capacity rather than tipping. Ratings are based on SAE standard No. J1097. Rated loads do not exceed 87% of hydraulic lift capacity or 75% of tipping load.



## LIFTING CAPACITY



- A: Reach from swing center
- B: Bucket hook height
- C: Lifting capacity
- Cf: Rating over front
- Cs: Rating over side
- ⊗: Rating at maximum reach

### Conditions:

- Arm: 2900 mm 9'6"
- Boom length 5150 mm 16'11"
- Bucket .65 m<sup>3</sup> .85 yd<sup>3</sup> (SAE heaped)
- Bucket weight: 500 kg 1,100 lb.
- Lifting mode: On

| PC160LC-7      |   | Shoe 800 mm 31.5" |                  |                   |                  |                  |               |                 |               |                 |                 | Unit: kg/lb      |                 |
|----------------|---|-------------------|------------------|-------------------|------------------|------------------|---------------|-----------------|---------------|-----------------|-----------------|------------------|-----------------|
| B              | A | 1.5 m 5'          |                  | 3.0 m 10'         |                  | 4.6 m 15'        |               | 6.1 m 20'       |               | 7.6 m 25'       |                 | ⊗ MAX            |                 |
|                |   | Cf                | Cs               | Cf                | Cs               | Cf               | Cs            | Cf              | Cs            | Cf              | Cs              | Cf               | Cs              |
| 7.6 m<br>25'   |   |                   |                  |                   |                  |                  |               |                 |               |                 |                 | *1950<br>*4,300  | *1950<br>*4,300 |
| 6.1 m<br>20'   |   |                   |                  |                   |                  |                  |               | *3100<br>*6,800 | 2950<br>6,500 |                 |                 | *1750<br>*3,800  | *1750<br>*3,800 |
| 4.6 m<br>15'   |   |                   |                  |                   |                  |                  |               | *3900<br>*8,600 | 2900<br>6,400 | *1750<br>*3,900 | *1750<br>*3,900 | *1700<br>*3,800  | *1700<br>*3,800 |
| 3.0 m<br>10'   |   |                   |                  | *7600<br>*16,800  | *7600<br>*16,800 | *5400<br>*11,900 | 4500<br>9,900 | *4450<br>*9,800 | 2750<br>6,100 | 3100<br>6,800   | 1850<br>4,000   | *1800<br>*3,900  | 1650<br>3,600   |
| 1.5 m<br>5'    |   |                   |                  | *10900<br>*24,100 | 7600<br>16,700   | *6850<br>*15,100 | 4100<br>9,000 | 4400<br>9,700   | 2600<br>5,700 | 3000<br>6,700   | 1750<br>3,900   | *1950<br>*4,300  | 1550<br>3,400   |
| 0 m<br>0'      |   |                   |                  | *7950<br>*17,500  | 7050<br>15,500   | 6700<br>14,800   | 3800<br>8,400 | 4200<br>9,300   | 2450<br>5,400 | 2950<br>6,500   | 1700<br>3,700   | *2250<br>*5,000  | 1550<br>3,400   |
| -1.5 m<br>-5'  |   | *5500<br>*12,100  | *5500<br>*12,100 | *10050<br>*22,200 | 6950<br>15,300   | 6550<br>14,400   | 3650<br>8,100 | 4100<br>9,100   | 2350<br>5,200 |                 |                 | *2850<br>*6,300  | 1700<br>3,800   |
| -3.0 m<br>-10' |   | *8550<br>*18,900  | *8550<br>*18,900 | *11250<br>*24,800 | 7050<br>15,500   | 6550<br>14,400   | 3650<br>8,100 | 4150<br>9,100   | 2350<br>5,200 |                 |                 | 3650<br>8,000    | 2100<br>4,600   |
| -4.6 m<br>-15' |   |                   |                  | *8600<br>*19,000  | 7300<br>16,100   | *5800<br>*12,800 | 3800<br>8,400 |                 |               |                 |                 | *4800<br>*10,600 | 3200<br>7,000   |

\*Load is limited by hydraulic capacity rather than tipping. Ratings are based on SAE standard No. J1097. Rated loads do not exceed 87% of hydraulic lift capacity or 75% of tipping load.



## STANDARD EQUIPMENT

- Alternator, 60 Ampere, 24V
- Auto-Decel
- Automatic air conditioner with defroster
- Automatic deaeration system for fuel line
- Automatic engine warm-up system
- Batteries, large capacity
- Boom and arm holding valves
- Cab
- Converter 12V
- Counterweight 2850 kg **6,280 lb**
- Dry type air cleaner, double element
- Electric horn
- Engine, Komatsu SAA4D107E-1
- Engine overheat prevention system
- Fan guard structure
- High pressure in-line hydraulic filters
- Hydraulic track adjusters (each side)
- KOMTRAX
- Multi-function color monitor
- Power maximizing system
- PPC hydraulic control system
- Radiator and oil cooler dust-proof net
- Rearview mirrors, (RH, LH, side, and counterweight)
- Retractable seat belt 76 mm **3"**
- Revolving frame deck guard
- Service valve (1 additional)
- Slip resistant plates
- Suction fan
- Suspension seat
- Track guiding guard, center section
- Track rollers: 7 each side
- Track shoes: 600 mm **24"** triple grouser
- Travel alarm
- Working lights, 2 (boom and RH)
- Working mode selection system



## OPTIONAL EQUIPMENT

- Arms
  - 2250 mm **7'5"** arm assembly
  - 2250 mm **7'5"** arm assembly with piping
  - 2610 mm **8'7"** arm assembly
  - 2610 mm **8'7"** arm assembly with piping
  - 2900 mm **9'6"** arm assembly
  - 2900 mm **9'6"** arm assembly with piping
- Boom, 5150 mm **16'11"**
- Boom, 5150 mm **16'11"** with piping
- Cab accessories
  - Rain visor
  - Sun visor
- Hydraulic control unit
- Pattern change valve
- Shoes, triple grouser:
  - 700 mm **28"**
  - 800 mm **31.5"**
- Track frame undercover



## ATTACHMENT OPTIONS

- JRB couplers (Smart Loc, Roto Loc)
- KAC/HKX hydraulic kit and accessories
- Komatsu buckets
- PSM thumbs
- Top window guard (wire mesh)
- Vandal protection guards and storage box
- Window guards (Lexan, wire mesh)

**For a complete line up of available attachments, please contact your local Komatsu distributor.**

**KOMATSU**<sup>®</sup>